

Lepidopteran *Who Am I?* Match-Up

Instructions: Read what each Larva says about itself, and draw a line to the adult it will become



I like to eat Queen Anne's lace (also known as wild carrot), and I spend the winters safe in my chrysalis. As an adult I am a striking individual, with dark formal attire and tails, although my yellow cousin is more common



Eight Spotted Forester Moth



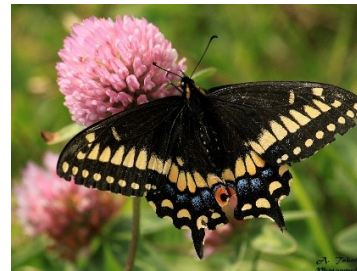
I like to eat cabbages and members of the mustard family. I am a smaller, not so colourful butterfly, but I can be often found in the city and in meadows



Virginia Tiger Moth



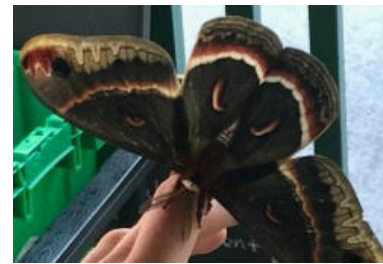
My favourite food is milkweed, and I am now a more common sight in the city. I have a very long journey ahead of me, so for now I am going to keep eating



Black Swallowtail



You can see me in this phase on the ground, I like to eat grass and clover. As an adult you will find I am a completely different colour, and active at a completely different time of the day



Cecropia Moth



You can find me munching on tree leaves such as maple, birch and apple, I am the largest of my kind in Canada, and my cocoon is made up of fibres that can also be found spun into thread



Monarch Butterfly



I can be found on the grape leaves and virginia creeper, as an adult I am not the best flier, so I only fly during the day



Cabbage White Butterfly